

Aperio
Technology.
Wireless
possibilities
for online
door control

ASSA ABLOY introducing Aperio

All over the world, demands for higher security and easy-to-use installations are increasing. Being the world leader in door opening solutions, ASSA ABLOY has developed technologies like Hi-O and CLIQ and continually researches the markets to gather information about end-user needs. In response to these needs, ASSA ABLOY has now developed Aperio: a powerful new technology integrating mechanical and electronic systems.

By introducing the Aperio technology, ASSA ABLOY pursues its commitment to driving the industry towards intelligent solutions around the door.



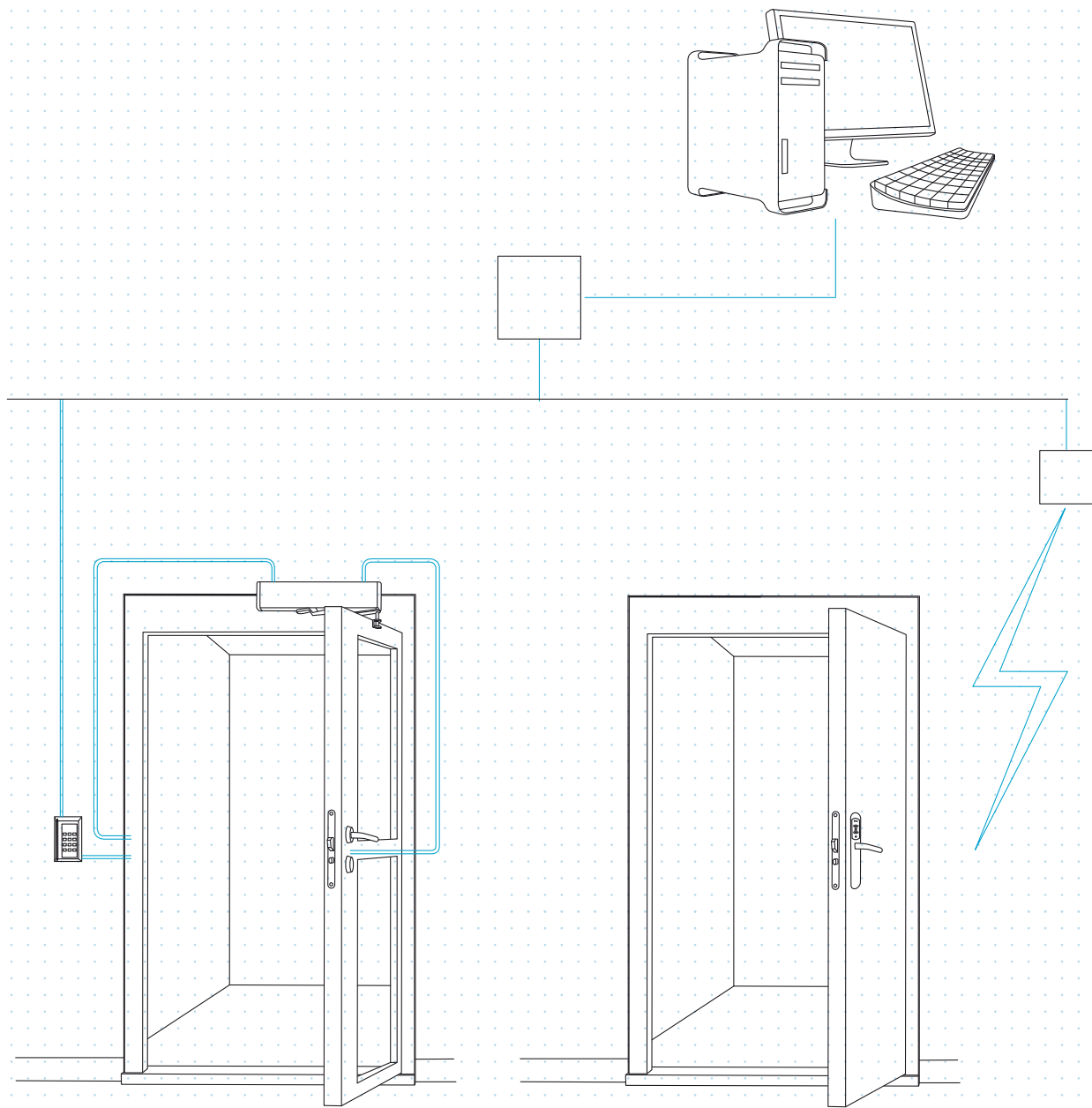
Aperio is the missing link

Aperio is a new technology developed to complement existing electronic access control systems, providing end-users with a simple, intelligent way to upgrade the controllability and security level of their premises.

The heart of Aperio is a short-distance, wireless communication protocol, designed to link an online electronic access system with an Aperio enabled mechanical lock.

Any number of existing doors can be equipped with Aperio, and at a much lower cost than installing the regular electronic access system on every door.

Aperio is easily integrated with most units and systems, regardless of the manufacturer, since it has been developed around an open standard.



Wired access control door

Aperio enabled door

Benefits of upgrading an existing system

Expanding an electronic access system with Aperio is more cost-effective than alternative solutions because it is easy to install and does not require any wiring of the door.

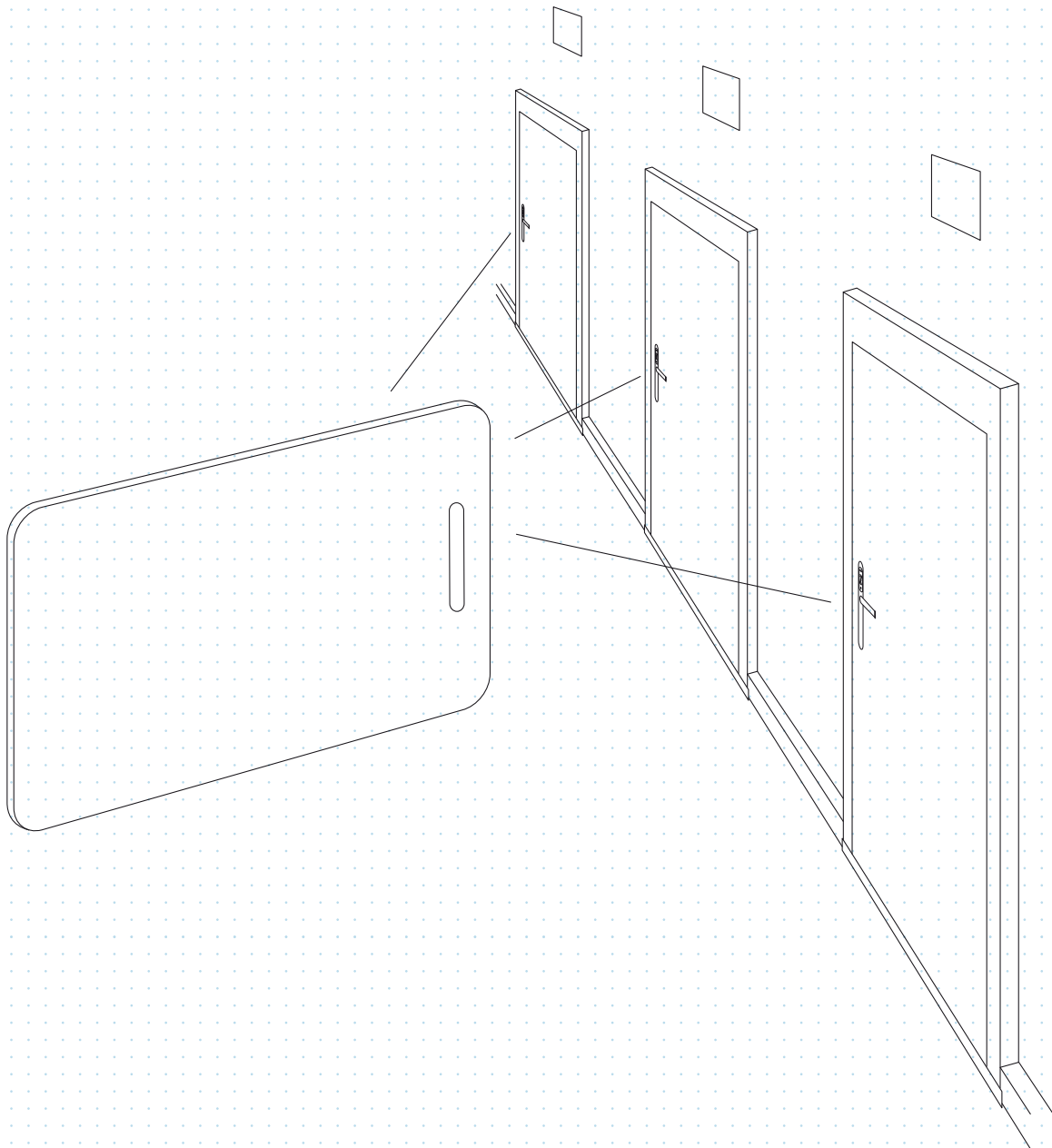
The technology is fully compatible with RFID technologies, so, in most cases, there is no need to change users credentials – just use existing cards. Doors and locking systems do not need to be exchanged, only upgraded with Aperio-enabled

products. This maximizes the benefit on investments that have already been made.

The open architecture of Aperio provides a convenient way of connecting with any standardized interface.

Aperio can serve as a possible first step towards an extended card-based future.

Existing cards can be used on additional doors.









Adding Aperio technology increases security

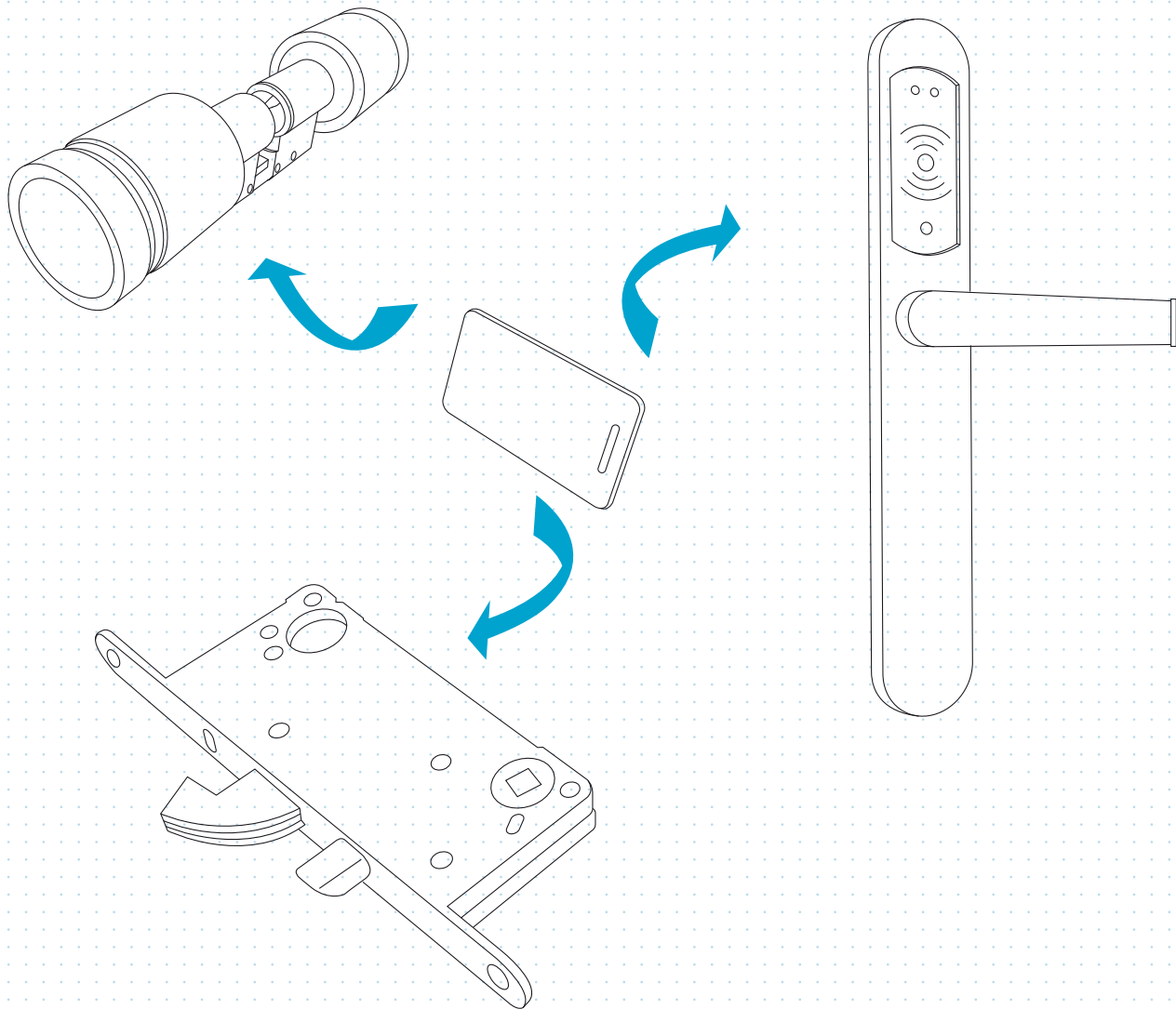
The Aperio technology
can be applied to
different kinds of
products around
the door.

Expanding your system by adding Aperio technology on additional doors increases the total security level of the premises. It is easy to install and enhances both the management and surveillance of the complete system. It also provides an intermediate level of security between wired doors and mechanical cylinders.

With all doors linked online, authorization is updated in real time, providing a high level of

control. The possibility to audit trail and time zone increases monitoring of the system.

Aperio technology fits perfectly into a system with wired doors, but it is also designed for future security demands, e.g., it uses AES encryption via a wireless connection.





Simplified management of security

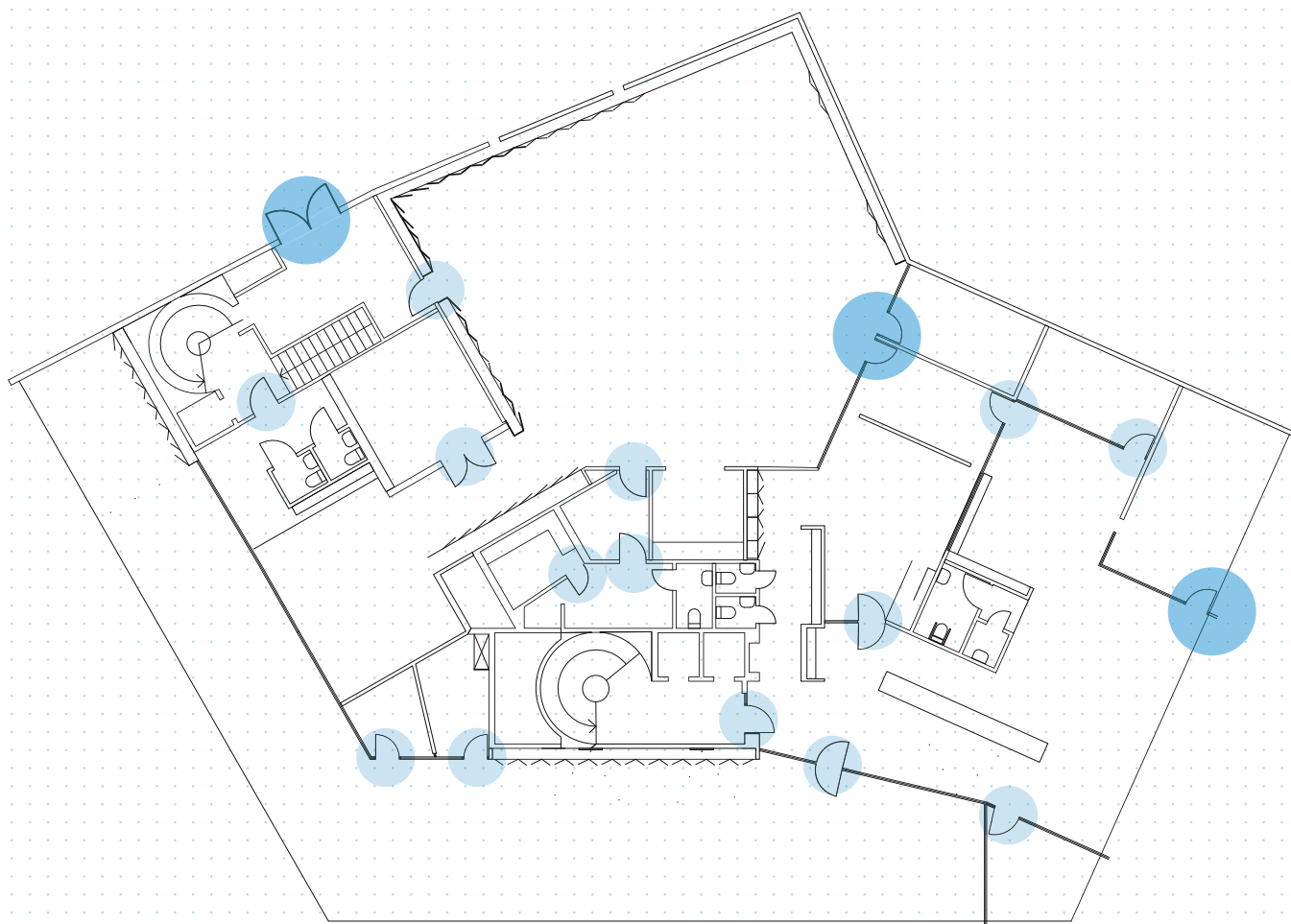
Any number of additional doors can be wirelessly connected to the access control system through Aperio technology.

Installing Aperio provides a simple way to facilitate card-based electronic access, while also fulfilling end-users' needs for an easily operated system.

Aperio enabled products are managed with an existing access control system. This offers a high level of control over usage, audit trails, and can be centrally managed.

Aperio technology, being compatible with most common RFID technologies, makes integration easy. In most cases, the existing cards can be used. With only one credential to manage, it is easy to update authorization online.

Having one credential for both wired and wireless doors is convenient for end-users. Choosing a card-based system also eliminates both the time-and-money-consuming process involved with lost keys.



- Wired access control door
- Aperio enabled door

Aperio is developed by the global leader in door opening solutions

The technologies developed by ASSA ABLOY enable end-users to plan long-term security investments without any doubt about the future and evolving standards.

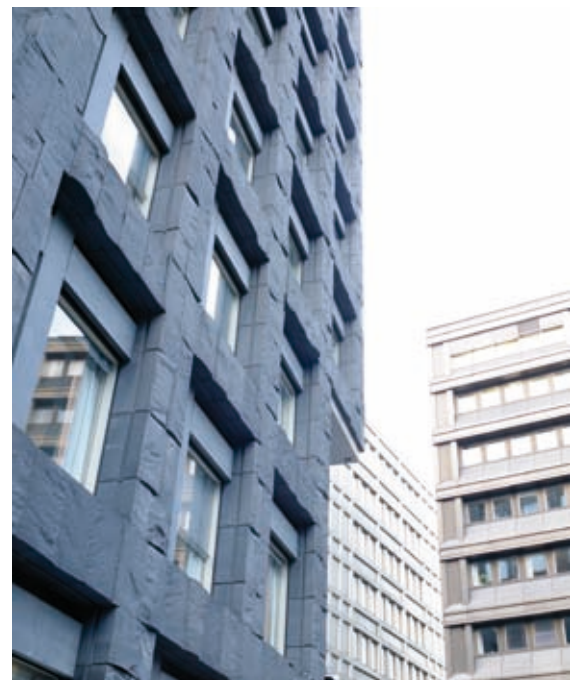
With an extensive history in door opening solutions, and new technologies already on the market, the ASSA ABLOY origin serves as a guarantee of quality solutions, long-term support and technological updates.

The ASSA ABLOY Group features more than one hundred companies, producing products all over the world and meeting demanding customer-needs and different standards.

Operating in forty countries, we form local partnerships and adapt to local products and standards.



As the global leader in door opening solutions ASSA ABLOY continually researches the markets to gather information about end-user needs.



Benefits

Convenience

Security manager:

- Aperio enabled products are managed with existing software and an access control system
- There is only one credential to manage
- Easy to install – no need to modify the door
- Easy to update authorization online, no need to visit each door
- Can use the existing cards, no need to exchange user credentials
- Supports most common RFID technologies

End-user:

- Only one credential for the wired and wireless doors

Open standard

- Not proprietary
- Existing RFID technologies
- Expandable

Security

- Online means authorization is updated in real time guaranteeing a high level of control
- Auditing trail and time zone increases system monitoring
- Provides an intermediate level of security between wired doors and mechanical cylinders
- Fits perfectly in systems with wired doors

Cost efficient

- Easy to install – no need to wire the door, therefore extremely cost efficient
- The RFID card credential is cheap and in most cases already existing

