

Locks for aluminium catalogue 2008



Locks for aluminium

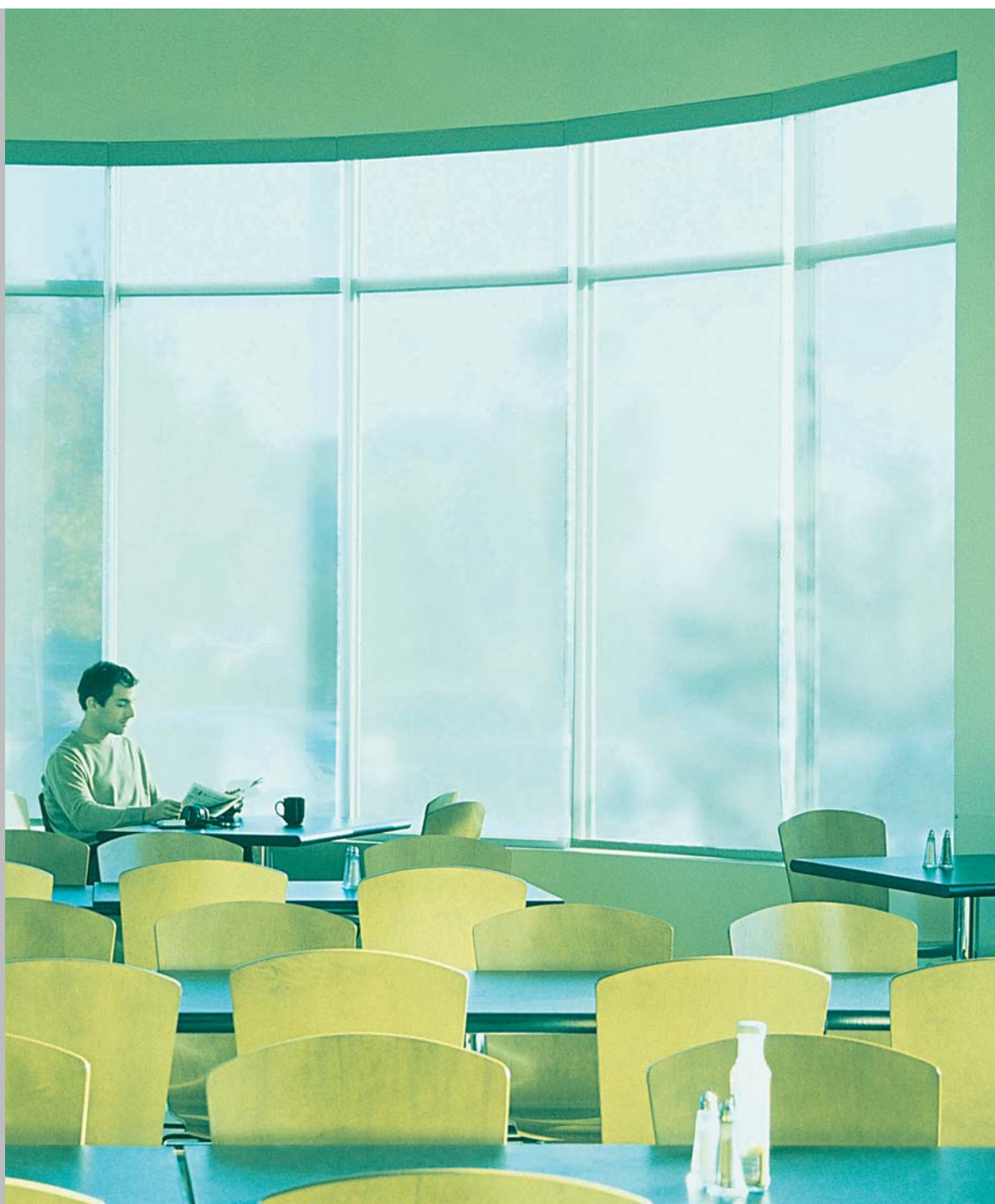
• 1 POINT LOCKS	4
• 3 POINTS LOCKS	6
• LOCKS FOR SLIDING DOORS	10

Locks for aluminium 1 point lock

The Stremler range of single point locks has been specially developed for metal doors, permanently striving for quality and innovation. These locks are comprised of many systems patented by Stremler over the last 20 years. French market leader for aluminium framed door and window locks, the Stremler range meets the most stringent standards in terms of security and quality and offers a wide range in order to respond to the variety of use in the market (case thicknesses 36, 37, 39, 41, 42, 45, 47, 52, 57).

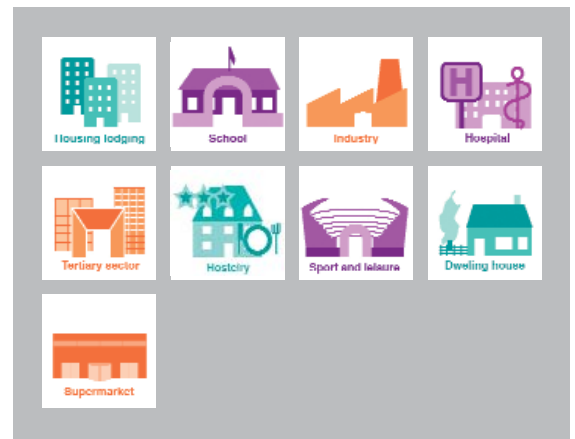
ADVICE

Stremler single point locks are particularly effective when associated to electric strike plates.

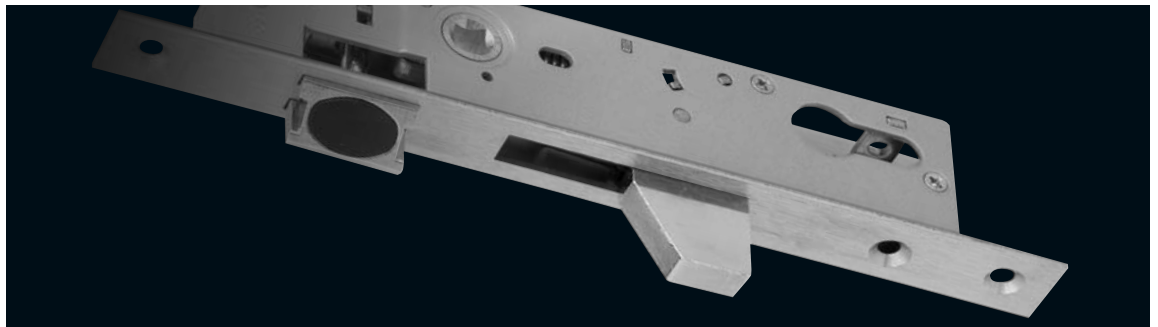


Applications

Interior or exterior aluminium or steel doors.



Technical datas



- Locks 92 mm between axes, follower 8 mm
- A European cylinder DIN bit (standard DIN 18254)
- Meets French Standard NF: P25.301
- Anti-corrosion protection on body and mechanism

Special features

COMFORT:

- The LPS System, slide plate fixed to the latch-bolt, softens closing noise, protects the profile from scratching and reduces the risk of seizing between the latch-bolt and the strike plate.

EASY TO INSTALL:

- The latch-bolt is reversible with out the use of tools, by simple manipulation.



2260



2264

Case width : 36 mm

Ref. 2260.36.0

Case width : 41 mm

Ref. 2260.41.0

Case width : 45 mm

Ref. 2260.45.0

Case width : 36 mm

Ref. 2260.36.0

Case width : 57 mm

Ref. 2260.57.0

TEXTE ANGLAIS MANQUANT (Rappel du pêne demi-tour à la clé
Pêne demi-tour et pêne dormant nickelés, condamnation à 1 tour de clé
Têtière acier inox 304 L, Entr'axe 92 mm - Fouillot 8 mm
Demi-tour réversible équipé du système LPS
Double verrouillage du pêne dormant, résistance à l'enfoncement 400 kg
Fixation de la serrure par 2 vis ou par clames (non fournies)
Pêne demi-tour rallongé de 5 mm sur demande
Montage avec béquilles sur rosace ou ensemble à vis traversantes
Serrure livrée sans barillet et sans gâche
Livrée avec 1 vis inox de barillet)

2260 : SPRING AND DEAD BOLT LOCK (PROJECTION OF DEAD BOLT 20 mm)

Lock conforms to standard NF : P26.301
Euro profile cylinder (standard DIN 18254)
Return movement of spring bolt by key
Case and mechanism with anti-corrosion treatment (96
hour salt spray test standard NFX 41.002)
Nickel plated spring and dead bolts, locked by one key turn
Faceplate in 304 L stainless steel.
92 mm centre distances follower 8 mm.
Reversible spring bolt, equipped with LPS system
Double locking of dead bolt, preventing entry by
break-in (400 kg)-Standard NF : P26.301
Use template reference 2836.01.0 for machining of
profiles
Lock fixed using 2 screws or clamps (not supplied)
Dead and spring bolt extended by 5 mm on request
Installation with handle on rose or handles with
through driven screws
Lock delivered without cylinder and strike plate
Delivered with 1 stainless steel screw for cylinder

2264 : DEAD AND ROLLER BOLT LOCK

Lock conforms to standard NF : P26.301
Euro profile cylinder (standard DIN 18254)
Case and mechanism with anti-corrosion treatment (96 hour salt-spray test
standard NFX 41.002)
Nickel-plated dead bolt, locked by one key turn
Faceplate in 304 L stainless steel
Double locking of dead bolt
Adjustable nylon roller
Use template reference 2836.01.0 for machining of profiles
Lock fixed using 2 screws or clamps (not supplied)
Lock delivered without cylinder and strike plate
Delivered with one stainless steel screw for cylinder

Case width : 36 mm

Ref. 2264.36.0

Case width : 39 mm

Ref. 2264.39.0

Case width 41 mm

Ref. 2264.41.0

Case width : 45 mm

Ref. 2264.45.0



2565



2360

Case width : 36 mm

Ref. 2565.36.0

Case width : 41 mm

Ref. 2565.41.0

Case width : 47 mm

Ref. 2565.47.0

Case width : 52 mm

Ref. 2565.52.0

Case width 57 mm

Ref. 2565.57.0

2360 : PIVOTING DEAD BOLT AND SPRING BOLT LOCK

Lock conforms to standard NF : P26.301

Euro profile cylinder (standard DIN 18254)

Return movement of spring bolt by key

Case and mechanism with anti-corrosion treatment (96 hour salt spray test standard NFX 41.002)

Nickel-plated spring and dead bolts locked by 1 key turn

Faceplate in 304 L stainless steel

Centre distances 92 mm follower 8 mm.

Reversible spring lock, equipped with LPS system.

Use template reference 2836.01.0 for machining of profiles

Lock fixed using 2 screws or clamps (not supplied)

Spring bolt extended by 5 mm on request

Installation with handles on rose and handles with through driven screw

References 2360.36.0 and 2360.39.0 are only compatible with the handles with two fixing points

Lock delivered without cylinder and strike plate

Delivered with 1 stainless steel screw for cylinder.

Case width : 36 mm

Ref. 2360.36.0

Case width : 39mm

Ref. 2360.39.0

Case width : 41 mm

Ref. 2360.41.0

Case width : 45 mm

Ref. 2360.45.0

2565 : LOCK WITH LEVER BOLT

Lock conforms to standard NF : P26.301

Euro profile cylinder standard (DIN 18254)

Return movement of lever bolt by key

Case and mechanism with anti-corrosion treatment zinc black iron (200 hour salt spray test)

Brass plated lever bolt, locked by 1 key turn

Steel faceplate fitted with an axis preventing dismounting of doors

92 mm centre distances follower 8 mm.

Use template reference 2836.01.0 for machining of profiles

Lock fixed using 2 screws or clamps (not supplied)

Installation with handles on rose or handles with through driven screws

Lock delivered without cylinder and strike plate

Delivered with 1 stainless steel screw for cylinder, 1 strike plate

Locks for aluminium 3 points lock

Fruit of the development of the range, the multipoint locks for aluminium structures include all the know-how acquired by Stremler, corresponding to a high level of requirements in terms of security.

ADVICE

To guarantee your system's long service life we recommend the use of Vachette lubricant.
Ref. 775 or 775 GM

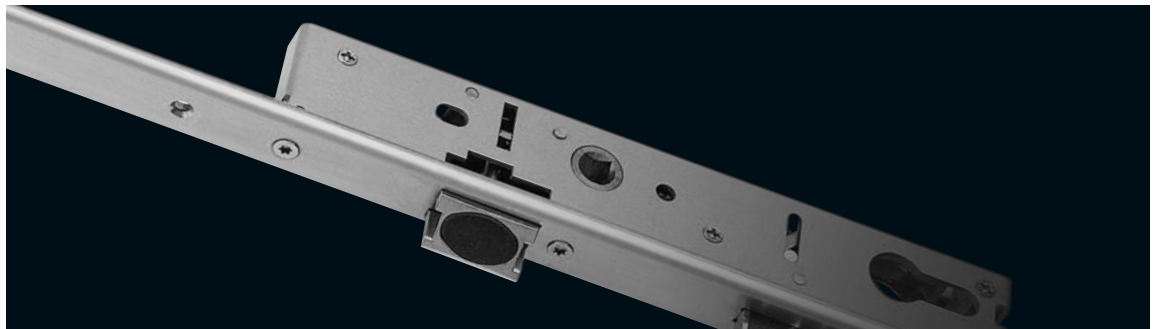


Applications

For aluminium doors requiring a high level of security



Technical datas



- Locks 92 mm between axes, follower 8 mm
- A European cylinder DIN bit (standard DIN 18254)
- Meets French Standard NF: P25.301
- Anti-corrosion protection on body and mechanism

Special features

COMFORT / RELIABILITY:

- The gear mechanism offers unequalled comfort of operation by reducing the effort required on the key for opening and closing. This type of mechanism renders the lock more hardwearing than locks with standard mechanisms.

EASY TO INSTALL:

- The Variaxe system allows easy adjustment of the positioning of the rods thanks to a sliding block.
- The latch-bolt is reversible without the use of tools, by simple manipulation.

3 points lock



6470 : DEAD AND SPRING BOLT LOCK, WITH LONG INTEGRATED FACEPLATE

Gear driven system.

Lock conforms to standard NF : P26.301

Euro profile cylinder (standard DIN 18254)

Return movement of spring bolt by key.

Case and mechanism with anti-corrosion treatment
(96 hour salt-spray test standard NFX 41.002)

Nickel-plated dead and dead spring bolts, locked by
1 key turn.

Case equipped with pivoting dead hook and
cylindrical spring bolt

Faceplate in 304 L stainless steel

Centre distance 92 mm, follower 8 mm.

Reversible spring bolt equipped with LPS system.

Use template reference 2836.03.1 for machining of
profiles

Lock fixed using 9 screws (not supplied)

Dead and spring bolts extended by 5 mm on
request.

Installation with handles on rose or handles with
through driven screws.

Lock supplied without cylinder and central strike
plate.

Delivered with 1 stainless steel screw for cylinder

- 2 stainless steel strike plate 2,5 mm thick.

- 4 polyamide bushes 5 mm thick.

- 2 covers for back of strike plate for top and bottom
bolts.

Case width : 36 mm

Ref. 6470.36.0

Case width : 39 mm

Ref. 6470.39.0

Case width : 41 mm

Ref. 6470.41.0

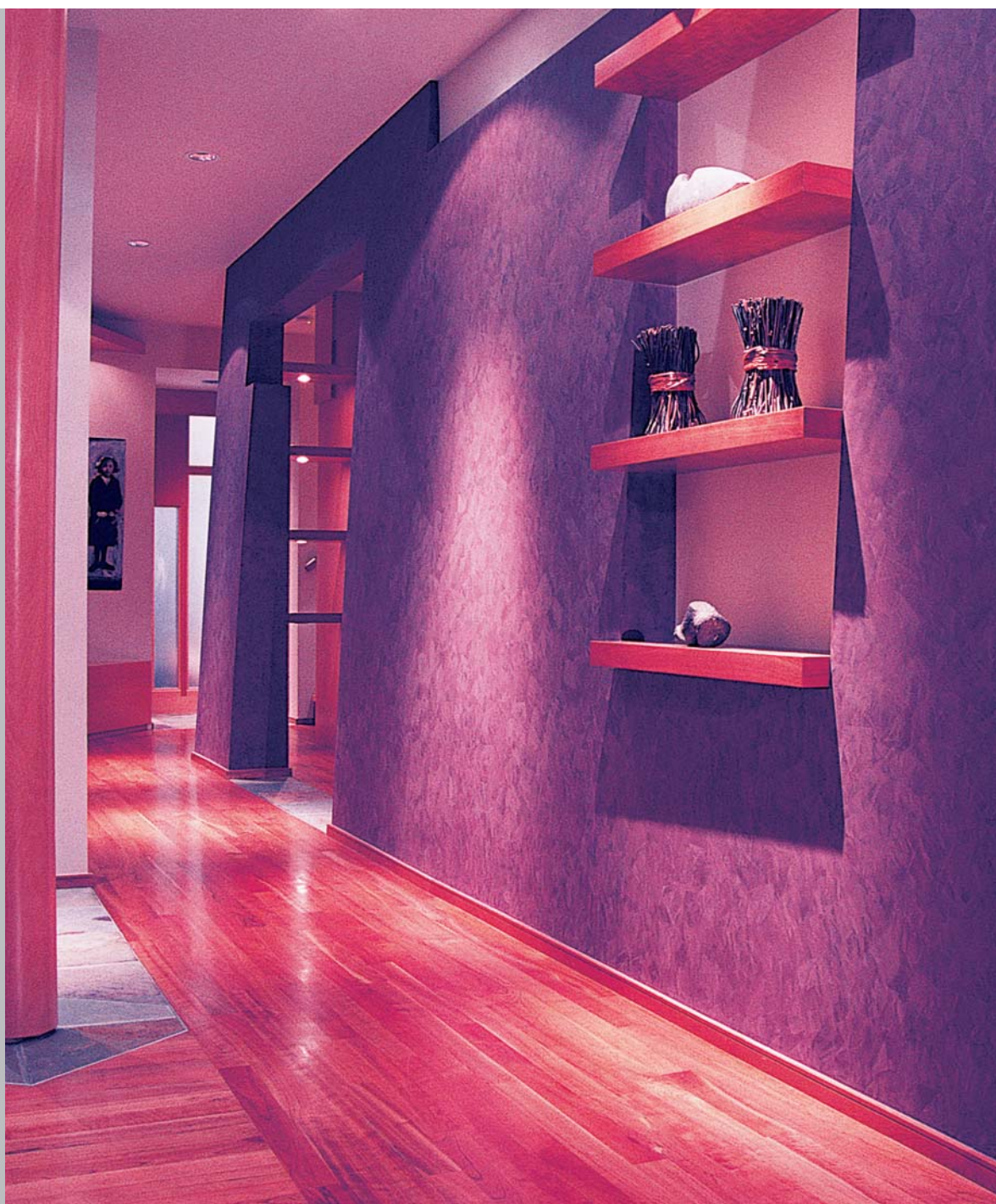
Case width : 45 mm

Ref. 6470.45.0

A large rectangular area with a grey border, containing 20 horizontal dotted lines for writing notes.

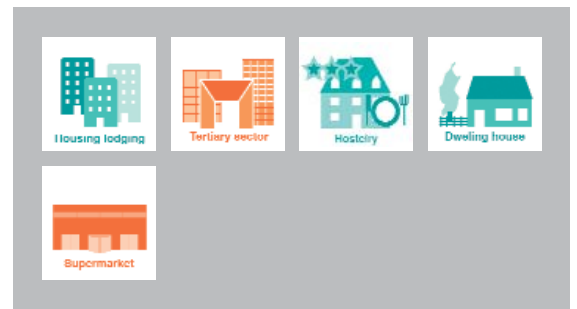
Locks for aluminium Locks for sliding doors

This particularly adaptable range of locks for French Windows, allows the users to adapt the product to their needs by combining the different elements of the range.



Applications

Locks for aluminium sliding French-windows requiring a high level of security.



Technical datas



- Locks 92 mm between axes, follower 8 mm
- A European cylinder DIN bit (standard DIN 18254)
- Meets French Standard NF: P25.301
- Anti-corrosion protection on body and mechanism

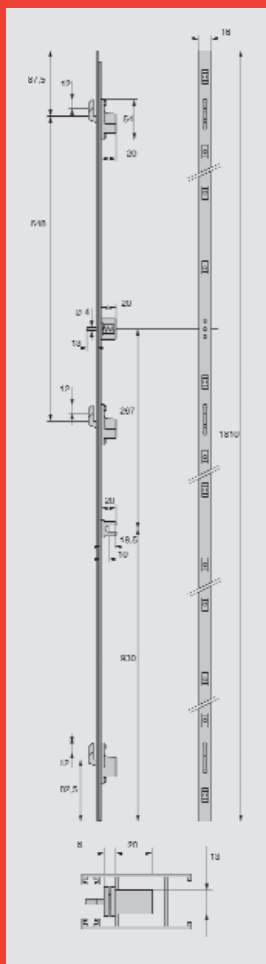
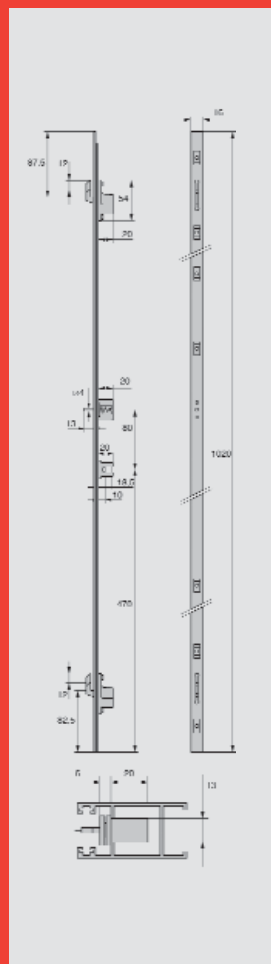
Special features

COMFORT / RELIABILITY:

- The gear mechanism offers unequalled comfort of operation by reducing the effort required on the key for opening and closing. This type of mechanism renders the lock more hardwearing than locks with standard mechanisms.

SECURITY:

- The hooks of this multipoint lock ensures the locking and anti-unhinging of the door.



(to avoid locked position when door is open)
Supplied without strike plate, with TCL screw n° 7 x 12,7 mm and compensating wedge for anti false manoeuvre
Used with control accessories of series 6400-6401-6407

3 hooks faceplate

Ref. 6403.00.0

2 hooks faceplate

Ref. 6402.00.0

6400 : LOCK WITH INTEGRATED PULL HANDLE

- gear driven system
 - Euro profile cylinder (standard DIN 18254)
 - reversible left or right
 - locking indicator (red / green mark)
 - use template reference 2836.04.0 or 2836.05.0 for machining of profiles
 - lock fitted on the inside of the sliding profile column using 2 TF M4 screws with inserts (supplied)
 - supplied without cylinder
- Calculating the length of euro profile cylinder
- inside length : 30 mm at axis of key bit
 - outside length : thickness of profile + 6,5 mm, add projection of stiffener if there is one, or the thickness of the outside handle for series 6405 (+ 7 mm)



6402 / 6403 : SURFACE-MOUNTED LONG INTEGRATED FACEPLATE FOR SLIDING DOORS AND WINDOWS

Surface-mounted on the profile edge
Faceplate in 304 L stainless steel
Hooks in hardened steel, adjustable in depth from 4 to 11,5 mm
Vertical run of hooks : 12 mm
Use template ref. 2836.04.0 to machine profiles
Anti false manoeuvre system

Anodized silver

Ref. 6400.10.0

Anodized black

Ref. 6400.17.0

Laquered white

Ref. 6400.51.0

Laquered black

Ref. 6400.52.0



6407 : LEVER LATCH WITH INTEGRATED PULL HANDLE

- fully reversible left or right
- locking indicator (red / green mark)
- use template ref. 2836.04.0 for machining of profiles
- latch fitted on inside of the sliding profile column using 2 TF M4 screws with inserts (supplied)
- supplied with axis extension 14 mm long

Anodized silver

Ref. 6407.10.0

Anodized black

Ref. 6407.17.0

Laquered white

Ref. 6407.51.0

Laquered black

Ref. 6407.52.0



6401 : FLUSH MOUNTED LEVER RECESS

- reversible left or right
- locking indicator (red / green mark)
- use template ref. 2836.04.0 for machining of profiles
- flush mount on inside of the column of the sliding panel

Anodized silver

Ref. 6401.10.0

Anodized black

Ref. 6401.17.0

Laquered white

Ref. 6401.51.0

Laquered black

Ref. 6401.52.0

ASSA ABLOY is the global leader in door opening solutions, dedicated to satisfying end-user needs for security, safety and convenience.

www.assaabloy.com

These are our product brands

